

TARDIS Plastic Canvas

by Michel McDonald



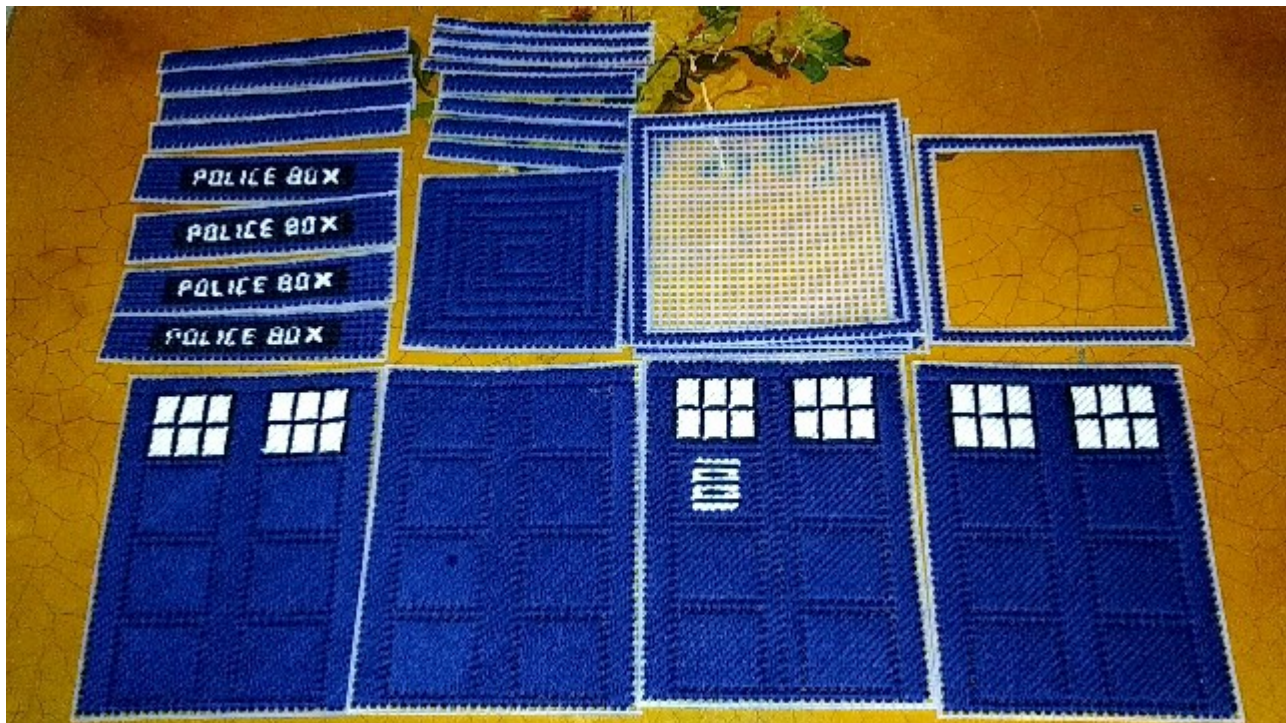
Items needed for this project:

- 2-3 sheets of 7 or 10 mesh plastic canvas *
- 1 skein of soft navy yarn
- 1 skein of blue yarn (optional)
- 1 skein of white yarn
- 1 skein of black yarn
- Yarn needle
- Scissors
- Patience

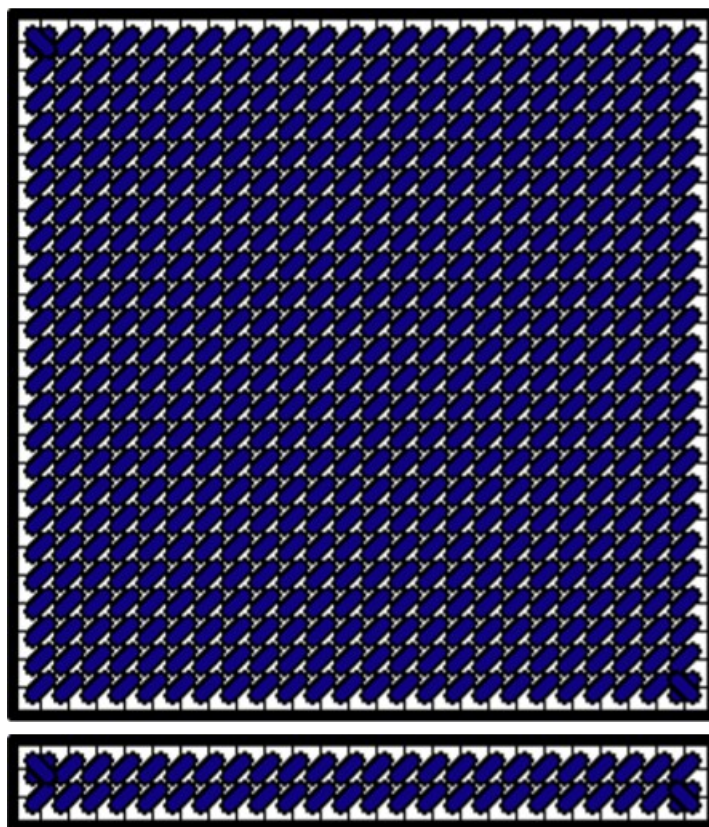
*Note: If you use 7 mesh you can use yarn, if you use 10 mesh, it will be better if you used embroidery floss or you could separate your yarn by half. Use blue if it is available at your local craft store.

These are the pieces you will need to cut, and these are from top to bottom.

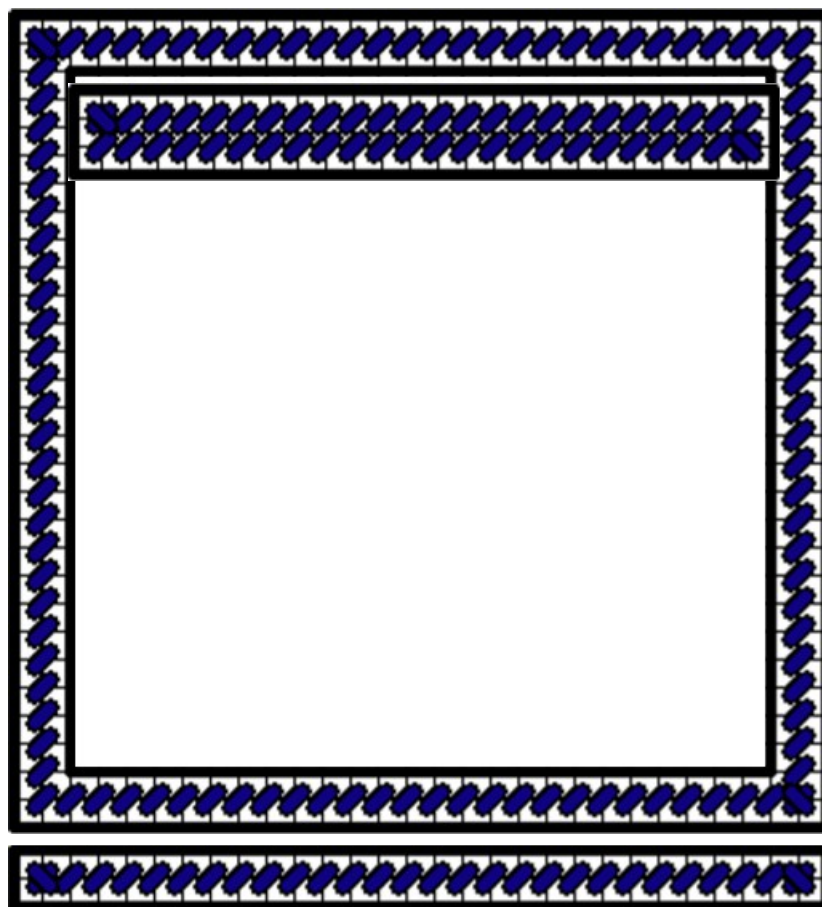
- 1 solid piece 25x25 plus 4 pieces that are 25x3
- 1 hollow piece 29x29 plus 4 pieces that are 29x2
- 1 hollow piece 33x33 plus 4 pieces that are 33x7 POLICE BOX
- 1 hollow piece 33x33 plus 4 pieces that are 29x39 Sides and door
- 1 hollow piece 33x33 plus 4 pieces that are 33x4
- 1 solid piece 33x33 for the bottom.



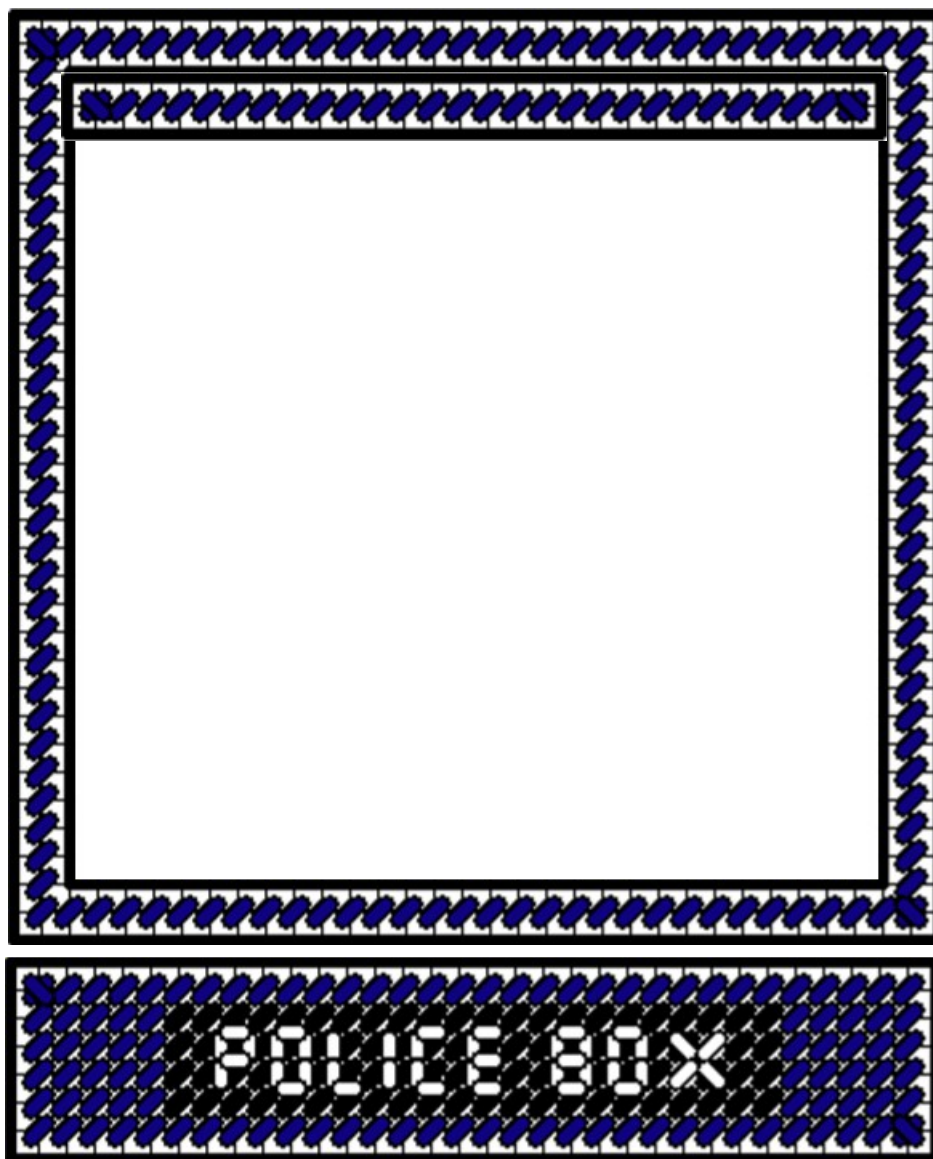
Starting at the very top, sew together your solid 25x25 piece and 4 25x3 strips, then sew the top of the strips to the outside of the solid piece. You don't have to sew it with single stitches. Use the image on the 2nd page for inspiration if you wish.



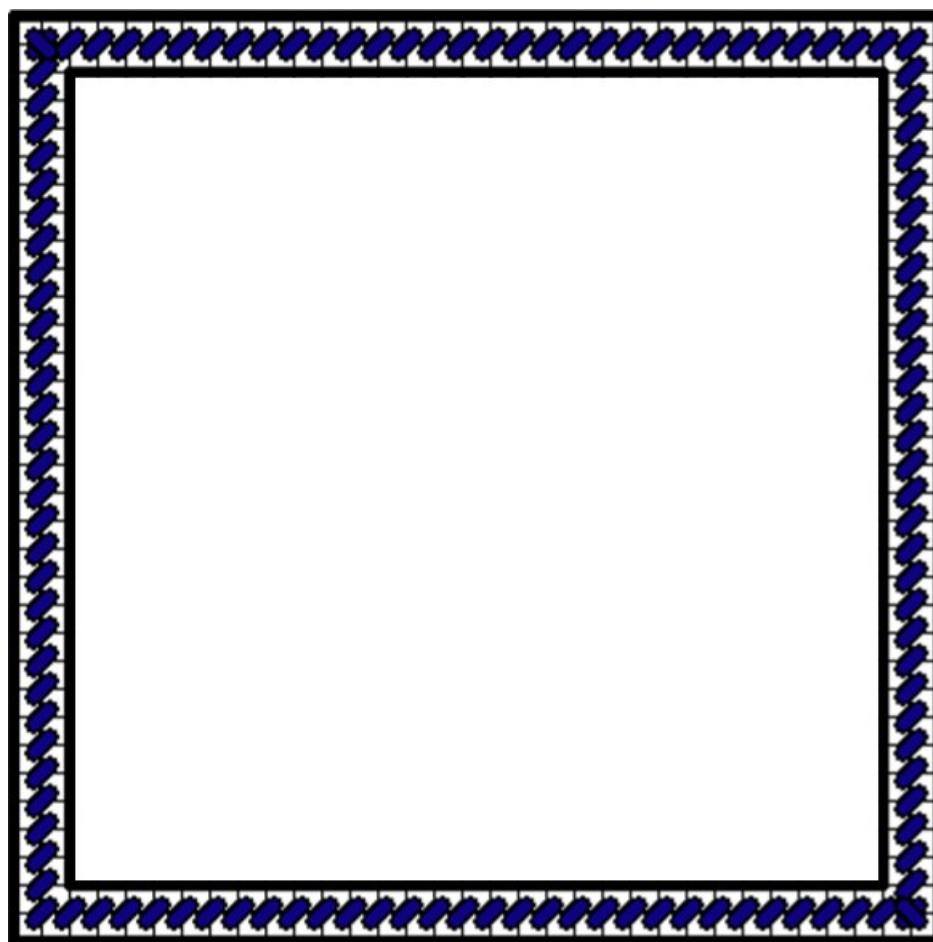
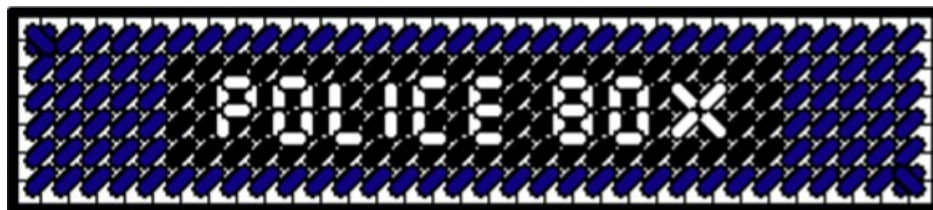
Cut and sew the first 29x29 hollow piece, and sew the bottom of the 25x3 strips to the inside of the 29x29 hollow piece. Then cut and sew the 4 29x2 strips and sew them to the outside of the 29x29 hollow piece.



Cut the 33x33 hollow piece and sew the bottom parts of the 29x2 pieces to the inside of the 33x33 hollow piece. Then cut and sew the 33x7 POLICE BOX pieces and sew them to the outside of the 33x33 hollow piece.

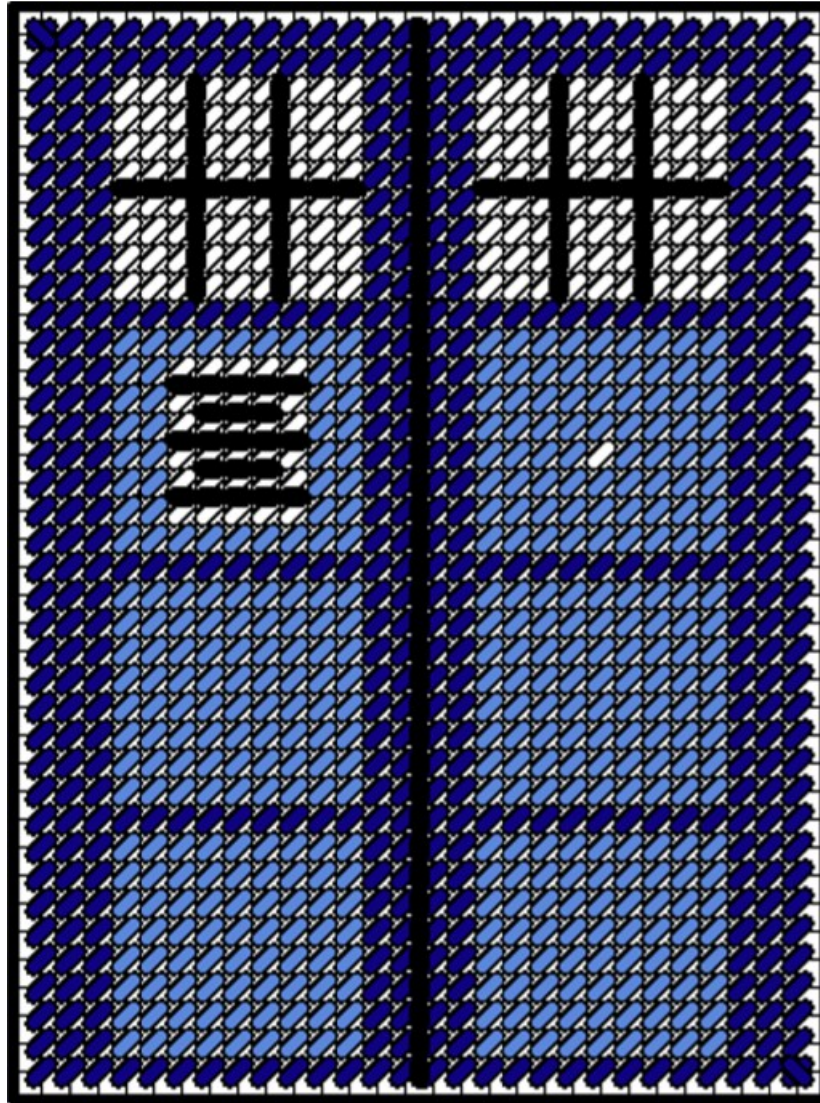


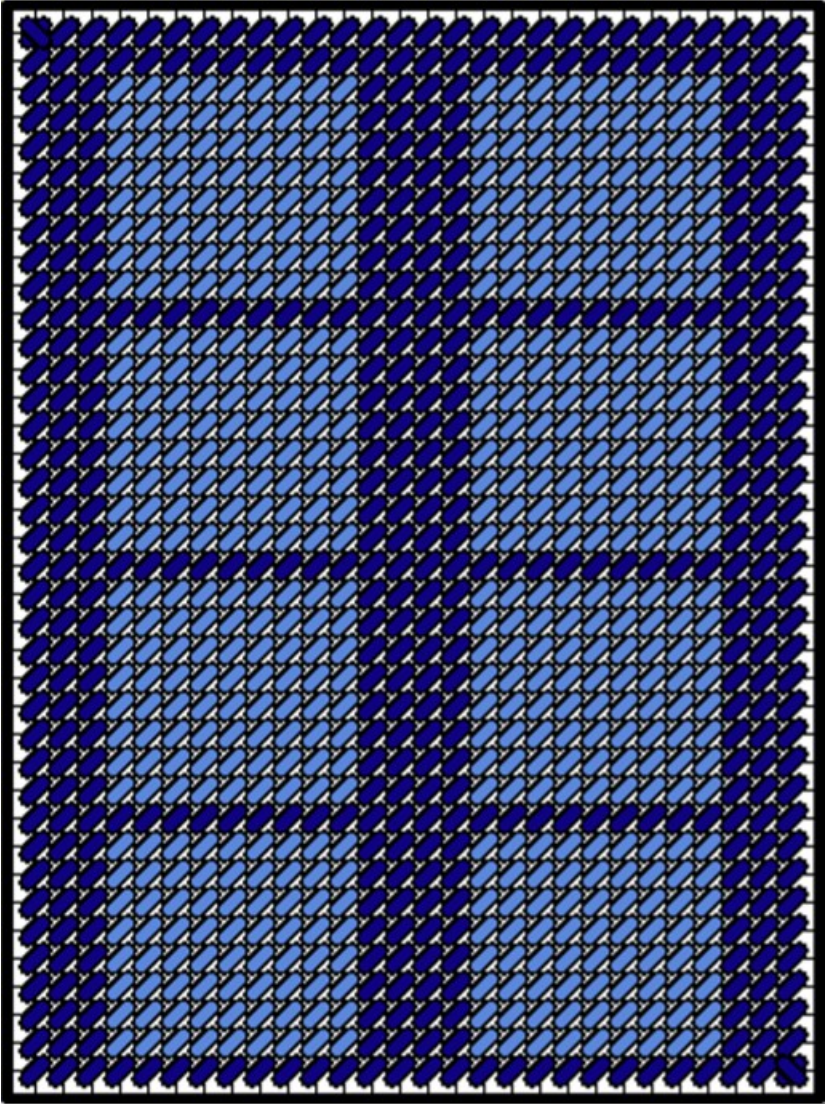
Cut and sew the 33x33 hollow piece and sew the bottom of the 33x7 POLICE BOX sides to the outside of the 33x33 hollow piece.



Cut and sew the 29x39 sides and door and sew the tops of those to the inside of the 33x33 piece.

Here's a thought. Don't just do single stitches like you see here. Go all the way across with the squares. Watch my video for inspiration. Also, for the side walls, you could add windows on those top panels. Use the image on the 2nd page for inspiration if you wish.





Finally, cut and sew another 33x33 hollow piece and sew the bottom of the 29x39 sides and door to the inside of the 33x33 piece. Cut and sew the 33x4 pieces and sew them to the outside of the 33x33 hollow piece and finally cut and sew the solid 33x33 piece and sew it to the outside of the 33x4 pieces.

